

# ActiveXperts Network Monitor

Proactively monitor network servers, devices, databases and more...

**ActiveXperts**<sup>®</sup>  
software  
www.activexperts.com

ActiveXperts Network Monitor is the leading solution for monitoring all aspects of your LAN and WAN servers, workstations and devices. For years, system administrators, network operators and helpdesk engineers have relied upon the power, flexibility and reliability of the ActiveXperts Network Monitor tool.

The mission of the product is to maximize the reliability of your production servers and applications through the automatic detection and correction of problems and issues.

## ■ Monitor multiple platforms

ActiveXperts Network Monitor monitors multiple platforms simultaneously, including Windows, Unix, Linux, and Novell.

## ■ Powerful Network Monitor Engine

The Network Monitor Engine runs on a central Windows Server as a service. It does not require Agent software on the servers you wish to monitor. Network Monitor software is ActiveXperts' core business.

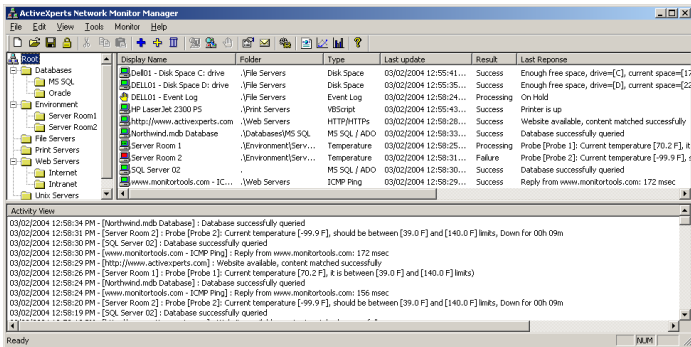
## ■ User Interface - Network Monitor Manager

Use the Network Monitor Manager application to view results and to make changes to the configuration.

Status of a server/device is indicated by a colored icon. For instance, green indicates successful, red indicates a failure.

Servers, devices and scripts can be organized in a hierarchical, folder structured way. The Network Monitor service can be stopped/started from the Manager's toolbar.

Install the Manager on multiple workstations in the network.



Define views (read-only) per site or subnet, using group permissions. Use permissions to allow Operators to make changes to the configuration.

## ■ User Interface – Web interface

The product provides a unique XML based Web interface. XML Views are generated by the Network Monitor Engine.

The XML based Web interface has the following advantages:

- Only requires one port on the firewall (for instance, port 80).
- No additional software installed on the client PC (i.e. no ActiveX controls, no Java Applets), no Java Scripting.
- Web interface can be fully customized by the use of XSL style sheets.
- Easy to monitor multiple networks from a single PC; just open multiple web pages, one for each network you are monitoring.

## ■ Built-in check routines

ActiveXperts Network Monitor ships with a powerful, pre-defined set of monitoring checks:

- Active Directory/ADSI.
- Anti-Virus software, incl. McAfee, Norton, NOD32, Kaspersky, Trend Micro, Avast, Norman and more.
- CPU Usage – ensure CPU Usage does not exceed limit.
- Databases – ADO, ODBC, Oracle and MS SQL.
- Disk drives, disk space – ensure drives are healthy; monitor disk space.
- DNS – ensure DNS server can resolve host names.
- Disks space, Directories & Files – various checks.
- Environmental – checks temperature, humidity, water leaks, smoke, noise, light, resistance, motion and more using a Sensatronics device.
- Event Logs – includes Event Log content checking.
- FTP/HTTP/HTTPS – includes content checking, support for proxies, firewalls and secure sites.
- ICMP/Ping.
- LDAP – execute an LDAP query, analyze the result.
- Memory – monitor system memory.
- MS Exchange Server, MS ISA Server, MS Terminal Server and other Microsoft-based back office servers.
- MS Message Queue, – check message queue length and/or message queue size.
- Memory – monitor system memory.
- NTP – ensure your Time Server is providing the right time, using the Network Time Protocol.
- NNTP – check your news server.
- Novell NDS – check Novell servers through ADSI interface.
- POP3 mail servers – check your POP3 servers.
- Printers – detect power off, paper jam and more.
- Processes – ensure that a process is executing; also monitor process memory.
- SSH, RSH – create your own custom monitoring check using SSH (Secure Shell) or RSH (Remote Shell).
- Services – ensure that a service is running.
- Scheduled Task – ensure that a scheduled task completed successfully.
- SMTP mail servers – check your SMTP servers.
- SNMP – check a device by monitoring SNMP counters.
- SNMP Trap Receive – receive trap(s).
- TCP/UDP – basic IP checks.
- User/group membership – validate Users and Groups.
- VBScript – create your own custom check using VBScript.

## ■ Reporting

With the ActiveXperts Report Module, you can create reports over a specified period of time.

Reports can either be run ad hoc, or they can be scheduled from the Windows Task Scheduler, which will run them automatically, periodically (e.g. daily, weekly or monthly). Scheduled reports can be sent automatically to (groups of) e-mail recipients. Report data is stored in an MS Access database by default and can be migrated to an MS SQL database at any time.

Features:

- Summary reports – these reports contain reports aggregate fields, such as total up-time, total down-time etc.
- Detailed Reports – these reports show all state changes.
- Filters – a comprehensive range of filters which can be applied.
- Create reports interactively (ad-hoc), from the command line or scheduled.
- Dedicated tool ('Report Configuration Tool') to define new report templates.
- Supported formats: XML, XML/XSL, HTML and CSV.
- Report distribution via e-mail.

## ■ Dependencies

Avoid a flood of notification messages when - for instance - a router fails, by configuring dependencies. Servers can depend on multiple servers; dependencies are transitive.

For example, if router A depends on router B, and router B depends on router C and router C fails, you'll be notified only about router C.

## ■ Custom check routines

ActiveXperts Network Monitor has a comprehensive set of built-in monitoring checks; all built-in checks also come as a VBScript function. This allows administrators to modify checks to meet their requirements. The Network Monitor Engine can process up to 32 VBScript/Shell scripts simultaneously.

## ■ Notifications

ActiveXperts Network Monitor alerts through e-mail, SMS, pager, network popup and SNMP/Trap when there's something wrong. SMS notifications require a GSM/GPRS modem. Notification messages can be customized by the use of notification templates.

## ■ Corrective actions

After an unexpected condition has occurred, ActiveXperts Network Monitor can automatically correct the problem by:

- Rebooting a server;
- Restarting (multiple) service(s);
- Running a batch-job, executable or VBScript program.

## ■ Advanced features

ActiveXperts Network Monitor has many advanced features to optimize the operator's needs, including:

- Repetitive alerting and notifications.
- Alternate credentials for servers outside a domain.
- Engine can be tuned; number of threads per check-type is configurable.
- Maintenance periods configurable, to avoid notifications during maintenance hours.
- Auto-backup feature, to backup configuration and scripts.
- Many other advanced features.

### System Requirements

- Windows 2008 x86/x64, Windows Vista x86/x64, Windows 2003 x86/x64, Windows 2000 with SP1 or higher, Windows XP.
- Internet Explorer 6 (or higher) or Mozilla Firefox 2.0 (or higher).
- Recommended: Sensatronics EM1 device to monitor temperature/humidity/water-leaks.
- Recommended: Falcom SAMBA 75 GSM/GPRS modem for SMS notifications.
- Recommended: MS SQL Server 2000 (or higher) or MySQL 4.0 (or higher) boost report creation performance.

Visit [www.activexperts.com/activmonitor](http://www.activexperts.com/activmonitor) for more information.

**Download your evaluation version at <http://www.activexperts.com/download>**

Requirements: 2008 / Windows Vista / 2003 / XP / 2000, 50 MB of free disk space